

P R A T T & L A R S O N

C E R A M I C S



SCRAFFITO

Introducing the new **Scraffito Series** from Pratt & Larson. Inspired by the ancient technique in which a surface layer is scratched to reveal a ground of contrasting color, this new collection was created by Michael Pratt in celebration of our 30th anniversary.

Raphael's painting workshop used Scraffito to decorate palace facades in Rome during the Italian Renaissance. The technique was revived and used within the Arts and Crafts Movement from 1890-1915. Michael employed this etching process to further explore tile influences from medieval Europe to Arabic geometry. These original designs were hand carved giving the lines a beautiful, drawn quality rarely captured in ceramic tile. Combined, the tiles create gorgeous overall patterns.

There are 4 different Scraffito designs, each is available in either a 5x10 or 8x8. Scraffito pricing falls under Group C in the Bas Relief category and may be ordered in Monochrome or Polychrome (Polywash). Learn more about this stunning new Polywash application on page 9 of this brochure. Please contact our customer service department with any questions about this new line. As always, we thank you for your continued support and efforts in representing the Pratt & Larson line.



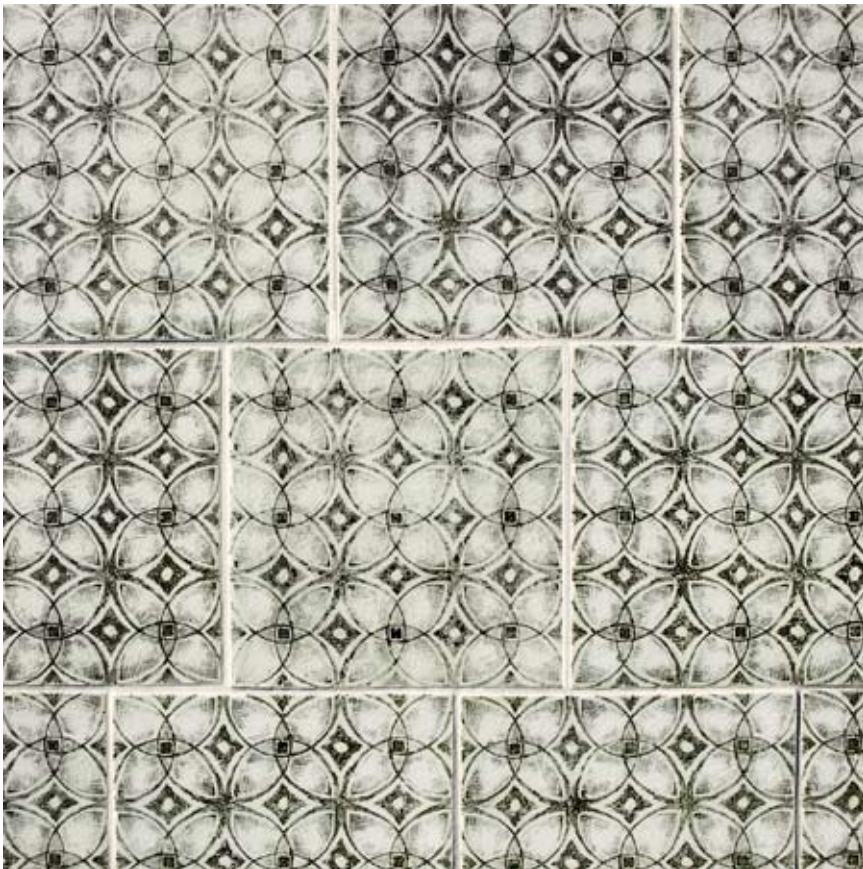
P R A T T & L A R S O N

C E R A M I C S



G2-68 (W76 & W85)

20x20

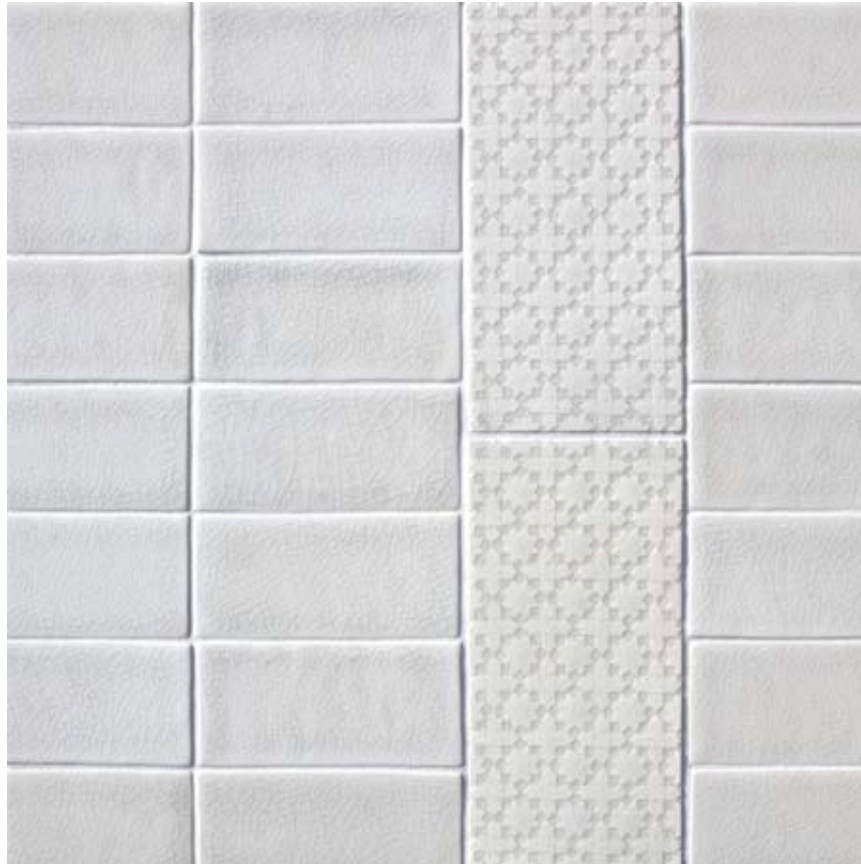


G2-69 (PW1 w/ India Ink)

20x20

P R A T T & L A R S O N

C E R A M I C S



G2-70 (W90)

20x20



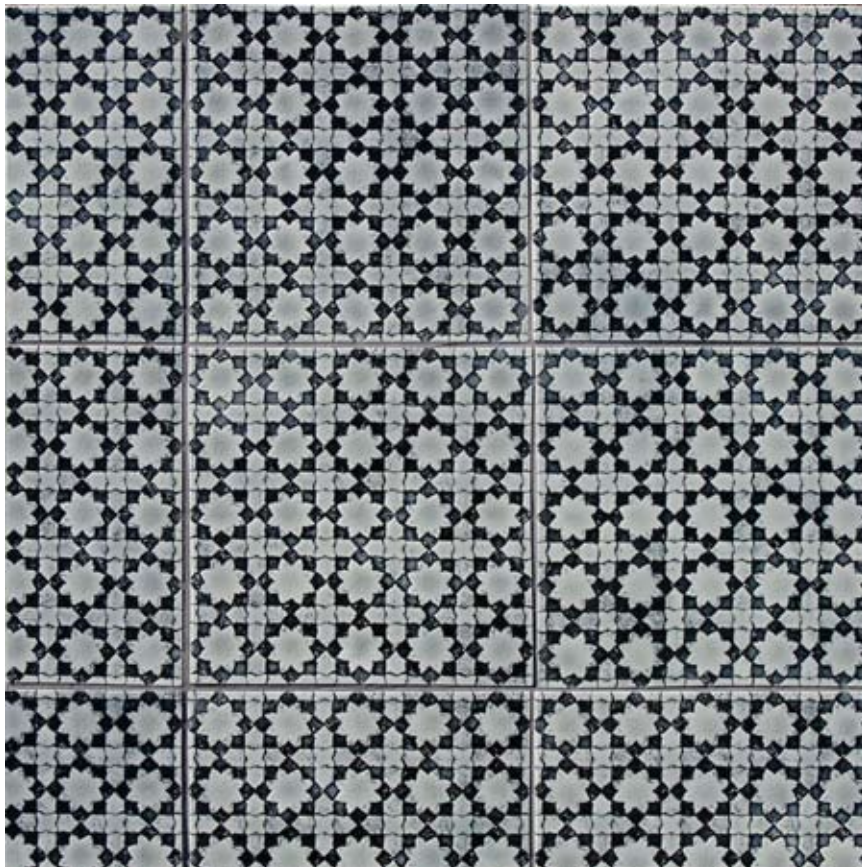
G2-71 (C59)

20x20



G2-72 (PW1 w/Silver)

20x20



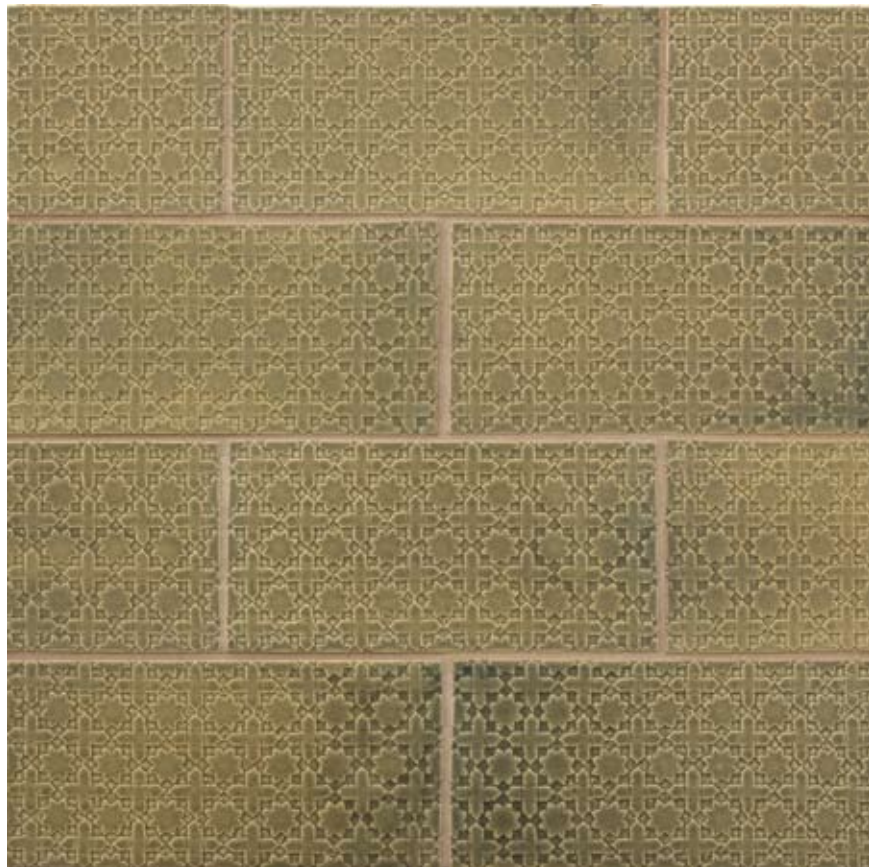
G2-73 (PW89 w/Charcoal)

20x20



G2-74 (PW40 w/Thyme)

20x20



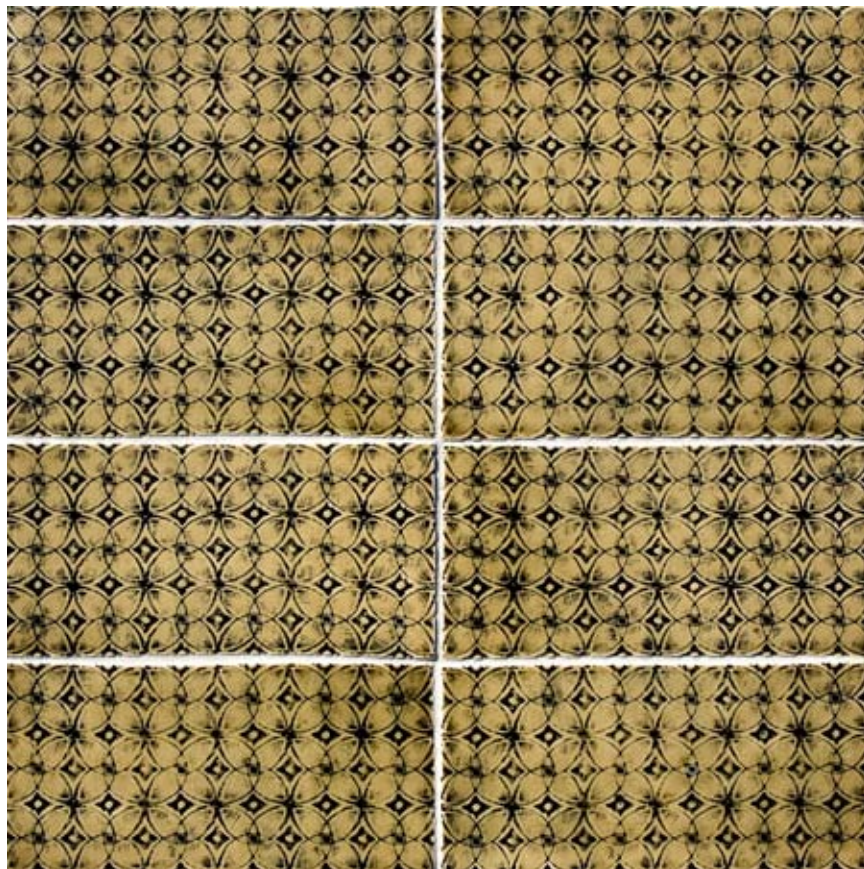
G2-75 (C65)

20x20



G2-76 (PW1 w/Thyme, S7, S8)

20x20

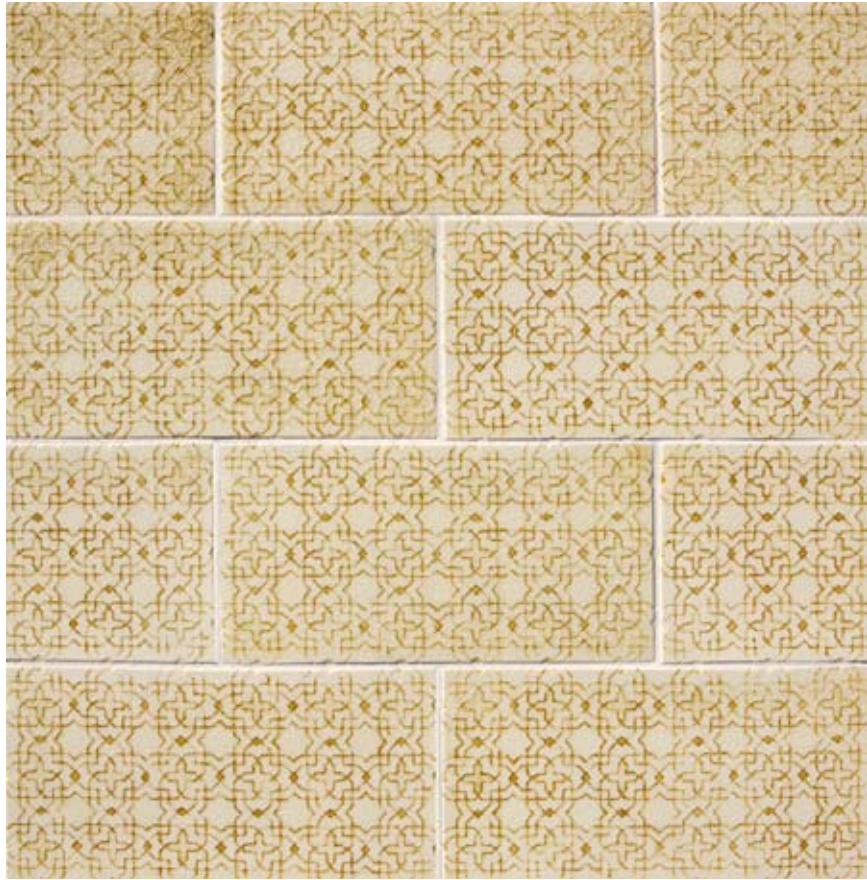


G2-77 (PW53 w/Charcoal)

20x20

P R A T T & L A R S O N

C E R A M I C S



G2-78 (PW20 w/Golden)

20x20



G2-79 (C92)

20x20

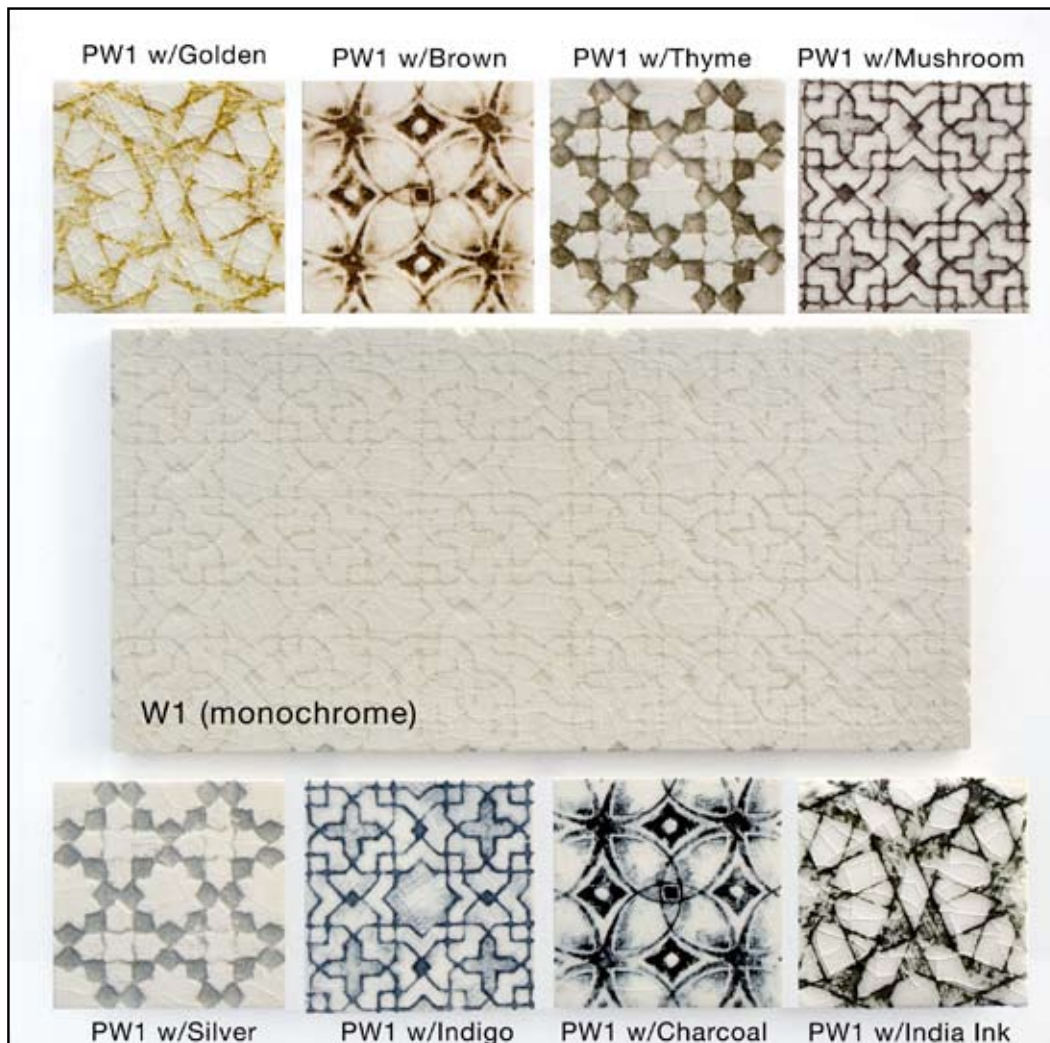
POLYWASH

All Scraffito designs can be ordered as monochrome in any of our existing glazes.

Scraffito can also be ordered in polychrome, this technique is called *Polywash (PW)*. Polywash is only available using the Watercolors glazes on the Scraffito designs.

Two colors are used in the Polywash technique; the contrasting *underglaze* which recedes into the carved line and the *overglaze* which covers the entire surface of the tile. The 8 underglazes are shown below: Golden, Brown, Thyme, Mushroom, Silver, Indigo, Charcoal and India Ink. You may use any of our existing Watercolors for the overglaze color. Using the lighter Watercolors for the overglaze shows underglaze details more clearly.

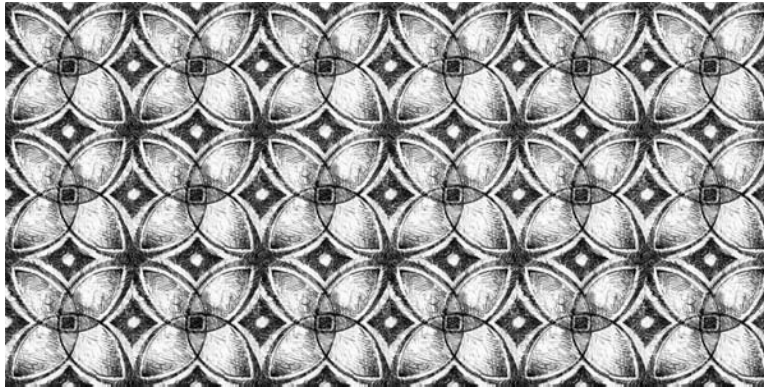
When ordering Polywash, use the code PW in front of the Watercolor overglaze number, followed by the desired underglaze color. Polywash pricing is the same as polychrome pricing.



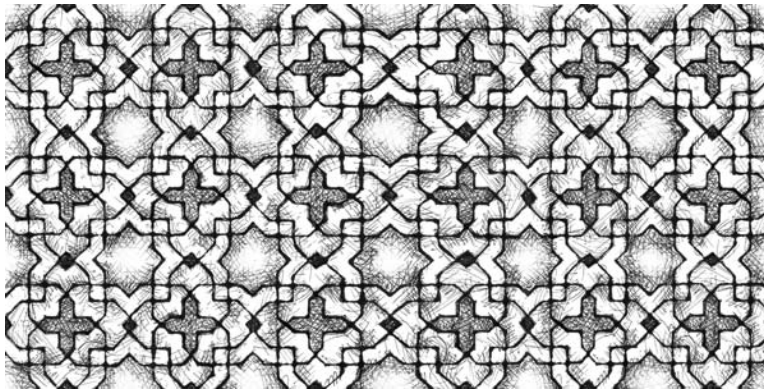
Polywash 1 Palette

Polywash Scraffito tiles are hand crafted and hand painted. Range and variation in color within the carved line is to be expected. Please order a job sample for approval. Watercolor glazes are not recommended for use on floors and kitchen counters.

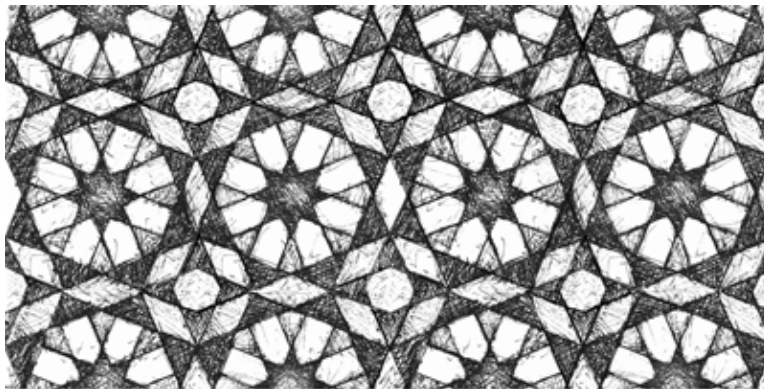
SCRAFFITO 5x10 PATTERNS



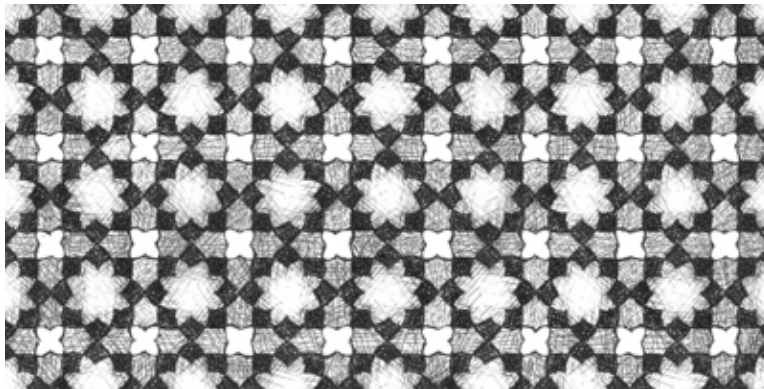
SC-510A Scraffito Pattern A 5x10



SC-510B Scraffito Pattern B 5x10

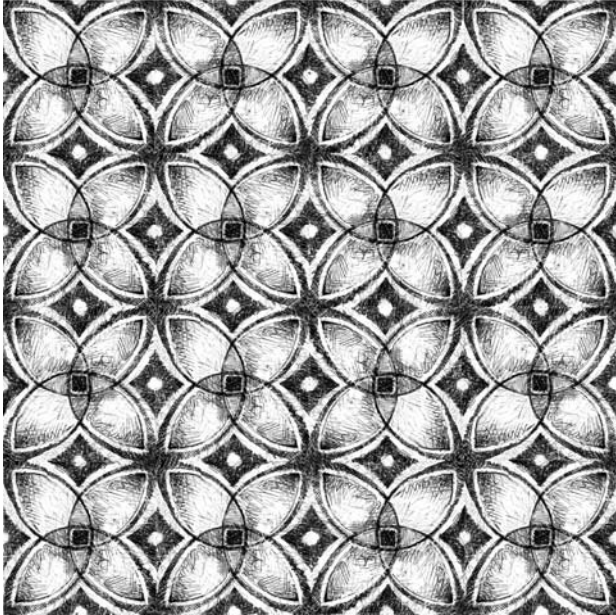


SC-510C Scraffito Pattern C 5x10

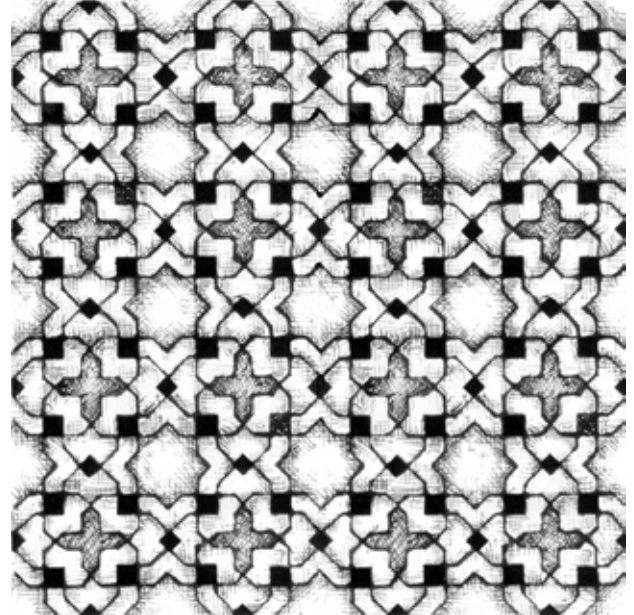


SC-510D Scraffito Pattern D 5x10

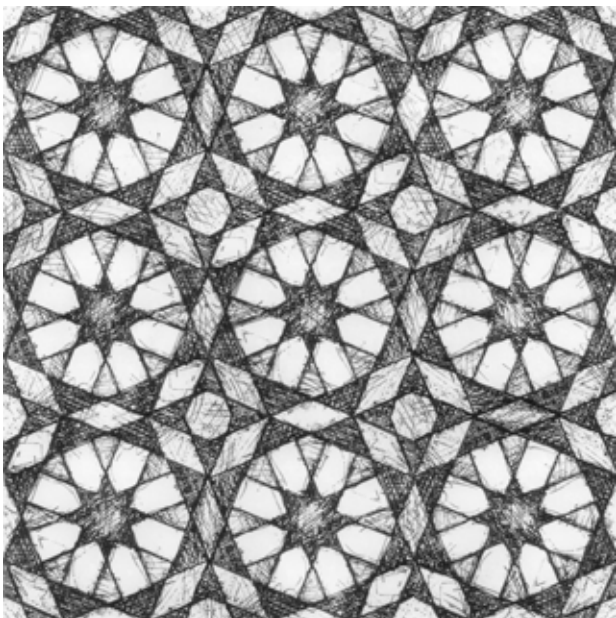
SCRAFFITO 8x8 PATTERNS



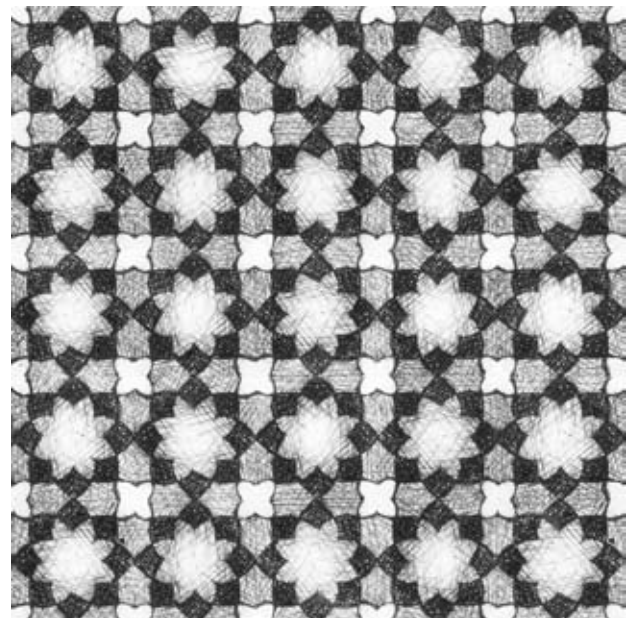
SC-88XA Scraffito Pattern A 8x8



SC-88XB Scraffito Pattern B 8x8



SC-88XC Scraffito Pattern C 8x8



SC-88XD Scraffito Pattern D 8x8

P R A T T & L A R S O N

C E R A M I C S

