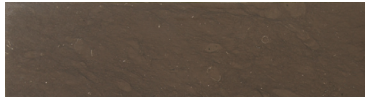


elements of style



AECSUA••44S
4" x 4" Stone Smooth Finish



AECSUA••416S
4" x 16" Stone Smooth Finish



AECSUA••1616S
16" x 16" Stone Smooth Finish



AECSUA••FRANCE
1-3/4" x 12" France Rail Smooth Finish



AECSUA••OPUS
5/8" x 12" Opus Liner Smooth Finish



AECSUA••1632S
16" x 32" Stone Smooth Finish

AECSUACASCFM44C
4" x 4" calacatta



AECSUACASCFM419
4 3/4" x 19" calacatta / fleece / mink

AECSUACASCMETAL44C
4" x 4" calacatta gold / metallo



AECSUACASCMETAL419
4 3/4" x 19" calacatta gold / metal

AECSUACASFLS44C
4" x 4" fleece / sable / lagos gold



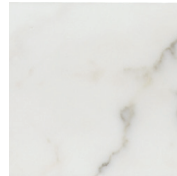
AECSUACASFMETAL419
4 3/4" x 19" fleece / sable / lagos gold

AECSUACASFMETAL44C
4" x 4" fleece / metal



AECSUACASFMETAL419
4 3/4" x 19" fleece / metal

colors



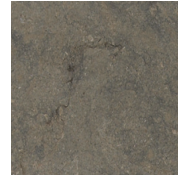
calacatta gold CA



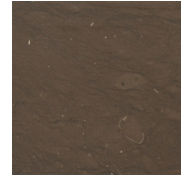
fleece FL



chinchilla CH



sable SA



mink MI

AECSUAMB122C

2" x 2" MB1 corner key - calacatta / mink



AECSUAMB1212
2" x 12" MB1 border - calacatta / mink

AECSUAMB222C

2" x 2" MB2 corner key - fleece / sable



AECSUAMB2212
2" x 12" MB2 border - fleece / sable

lines and medallions



AECSUAMC3A33C
four 3 x 3" MC3A corner keys that make a 6" x 6" - calacatta / metal



AECSUAMC3B33C
four 3 x 3" MC3B corner keys that make a 6" x 6" - fleece / metal



AECSUAMC3A312
3" x 12" MC3A border - calacatta / metal / mink



AECSUAMC3B312
3" x 12" MC3B border - fleece / sable / metal



AECSUACC344C
four 4" x 4" CC3 corner keys that make a 8" x 8" - calacatta / sable / gold / nero



AECSUACC144C
four 4" x 4" CC1 corner keys that make a 8" x 8" - calacatta / fleece / mink / giallo / rosso, collem



AECSUACC3412
4" x 12" CC3 border - calacatta / sable / gold / nero



AECSUACC1412
4" x 12" CC1 border - calacatta / fleece / mink / giallo / rosso, collem

AECSUAF244C

4" x 4" FA2 corner key - calacatta / sable / gold / nero



AECSUAF2412
4" x 12" FA2 border - calacatta / sable / gold / nero

AECSUAF144C

4" x 4" FA1 corner key - mink / calacatta / gold / fleece



AECSUAF1412
4" x 12" FA1 border - mink / calacatta / gold / fleece

casanova borders

calacutta



AECUACASFMETL1212 8 peices placed together to show pattern



AECUACASFCGFM1212
12" x 12" calacatta / fleece / mink



AECUACASCMETL1212
12" x 12" calacatta / stainless



AECUACASFFLS1212
12" x 12" fleece / lagos gold / sable



AECUACASFMETL1212
12" x 12" fleece / stainless



AECUACIRFMETAL12 8 peices place together to show pattern



AECUACIRCMETAL12
12" x 12" circles calacutta gold / stainless



AECUACIRFMETAL12
12" x 12" circles fleece/ stainless



AECUACASCFM44C
four 4" x 4" CC1 corner keys that
make a 8" x 8" - calacatta /
fleece / mink



AECUACASFLS44C
our 4" x 4" CC1 corner keys that
make a 8" x 8" - fleece / sable /
lagos gold



AECUACASFLS44C
four 4" x 4" CC1 corner keys that
make a 8" x 8" fleece / metal



AECUACASCMETAL44C
four 4" x 4" CC1 corner keys that
make a 8" x 8" calacatta gold
/ metal

la-dada



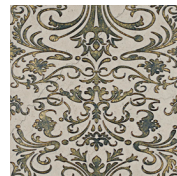
AECTADCADEC1212S
12" x 12" calacatta with silver
leaf inlay



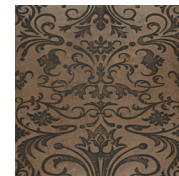
AECTADFLDEC1212V
12" x 12" fleece with vanilla
bean wash



AECTADSADEC1212E
12" x 12" sable with espresso
bean wash



AECTADCHDEC1212P
12" x 12" chinchilla with patina
gold leaf inlay



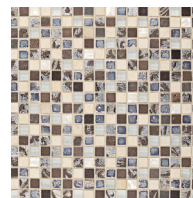
AECTADMIDEC1212E
12" x 12" mink with espresso
bean wash



AECTADCHDEC1212E
12" x 12" chinchilla with espresso
bean wash



AECTADMOSCSG58
5/8" x 5/8" mosaic calacutta / silver
leaf / glass



AECTADMOSFMG58
5/8" x 5/8" mosaic fleece / mink /
silver leaf / glass